

WARNING

INSTALLATION OVER A HARD SURFACE SUCH AS CONCRETE, ASPHALT OR PACKED EARTH MAY RESULT IN SERIOUS INJURY OR DEATH FROM FALLS.



Appropriate for Children 2 to 5 Years of Age.

TimberForm-2 4605

Number of Play Components:

- 9 Total Play Components**
- 4 Elevated Play Components (4 Accessible)
- 5 Ground Level Play Components (5 Accessible)

Play Area, Equipment Only:

19' x 20' (5.8m x 6.1m)

Minimum Safe Use Zone:

31' x 32' (9.5m x 9.8m)

Colors Illustrated:

Accessories: Ocean Teal

Decks: Plastic-coated
Perforated Steel, Brown

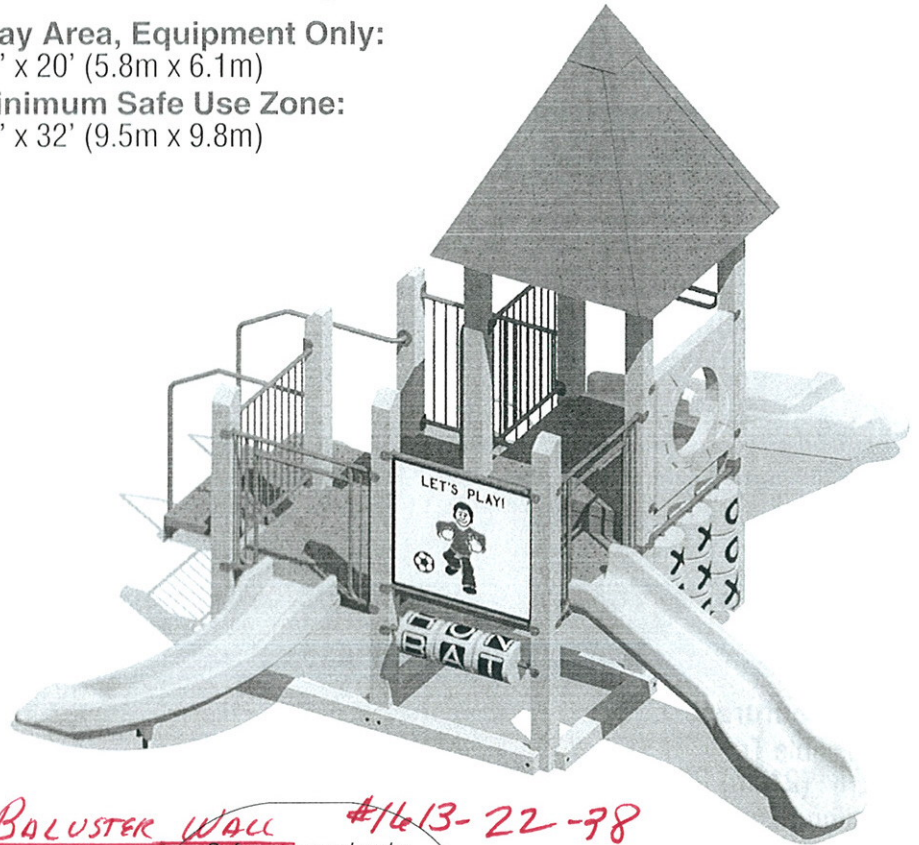
Plastic: Yellow

4605 Features:

- Accessible Transfer Station, 8" (21cm) Riser
- Baluster Wall with Ship's Wheel
- Baluster Wall (2)
- Talk Tube
- Wide Slide Chute, Wave/Slalom
- ~~Bubble Panel~~
- Tic-Tac-Toe
- ~~Perforated Steel Roof~~
- Slide Chute, Curved
- "Let's Play!" Panel
- Spelling Panel
- Tot Slide Chute, Curved
- Welcome/Rules Sign

Deck Heights:

- 8" 205mm
- 16" 405mm
- 24" 610mm
- 32" 815mm
- 40" 1015mm
- 48" 1220mm



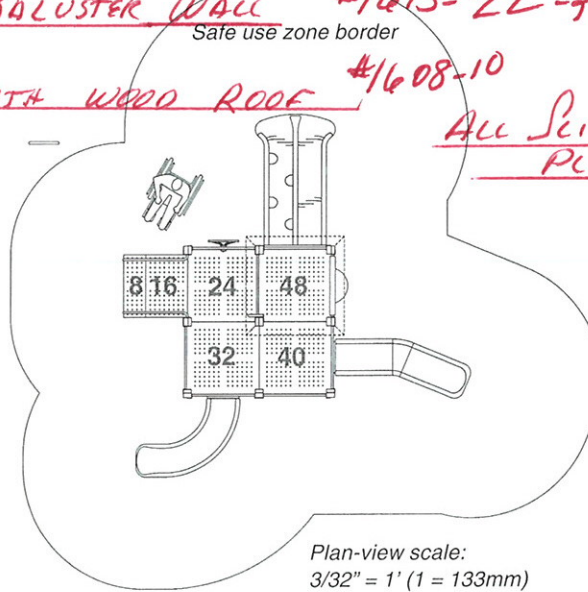
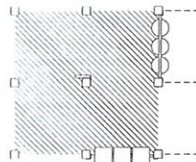
~~Bubble Panel~~ REPLACE WITH BALUSTER WALL #1613-22-98

Safe use zone border

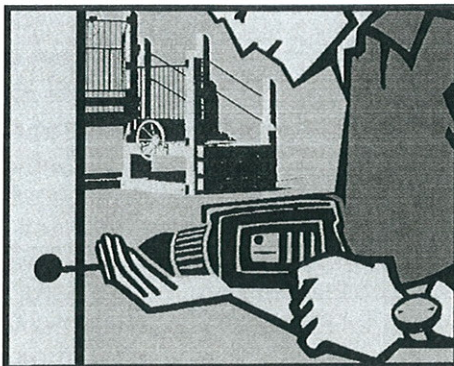
~~Perforated Steel Roof~~ REPLACE WITH WOOD ROOF #1608-10

ALL SLIDES TO BE PLASTIC

Play features beneath decks



Plan-view scale:
3/32" = 1' (1 = 133mm)



TimberForm-2 for Community-Built Playgrounds

Community leaders are changing the face of playgrounds throughout the world and TimberForm-2 makes it easier than ever. Neighbors using workshop power-tools, shovels and levels can assemble most TimberForm-2 playground installations in less than a day. TimberForm-2 dramatically reduces the need for many concreted posts and allows for much simpler and quicker playground equipment installation by volunteers. Assembly is made easier by the use of a construction scale-model instead of complicated drawings. **Large 3 x 4 foot color poster depictions are available for publicity and fund-raising at nominal cost credited when the order is entered.** See page 26 for more.

2/25